

Census 2006

Skills and occupations

Education- area of qualification

Travel to work

Disability, Carers and Voluntary activities

County Development Board

12th December 2007

Siobhan O'Neill

Research Officer

Community and Enterprise

Wexford County Council

Executive Summary

Recent Census Releases include:

- 1. Skills and occupations**
- 2. Education- area of qualification**
- 3. Travel to work**
- 4. Disability, Carers and Voluntary activities**

1. Skills and Occupations

The largest area of employment for Co. Wexford workers is the Clerical, Managing and Government area with 14.7% of the workforce now employed within the area.

The next most common area of employment for Co. Wexford is now the Sales and Commerce area. The Services area has also grown in the last Census period, with Co. Wexford proportionally now the largest employer in the sector within the South East.

2. Education- Area of qualification

The most popular areas of qualification in the region are the Social sciences, Business and Law areas, followed by the area of Life sciences, Physical science and Mathematical science.

The Social sciences, Business and Law areas are also one of the most popular areas of Third level education in the county. Co. Wexford has one of the highest proportions of those qualified in the region to Third level in the Services area, reflecting the changing workforce. Education is still comparatively and proportionally high, as is the Health area. The high proportion of those qualified in multiple subjects is also high, a positive pointer towards an adaptable workforce.

3. Travel to Work

Comparing the proportional means of travel in the region in 2006, almost 67% of the population either drive or are a passenger in a car driving to work. The highest recorded

proportion of Car users are in Co. Waterford with almost 70% of those working using the car as their primary means of travel. Co. Waterford also has the highest proportion of those travelling to work on foot.

The proportion of those using a Lorry or van in Co. Wexford is now 11.2% of the working population and almost 7.6% of the workforce work from home, although this has decreased since the last Census in 2002. Co. Kilkenny has the highest proportion of those working from home at almost 9%.

There has been an increase in motor car usage with 60% now driving to work and another 7% traveling as a passenger, compared to 56.3% and 7.8% in 2002, respectively. The proportion traveling to work on foot has remained unchanged at 11%, as with the proportion traveling by bus or train, and those traveling by bicycle. The proportion of those travelling by Lorry or van has increased by just over .5%.

The proportion of people traveling over 24kms has increased to 25%, or a quarter of the workforce traveling to work. 12% of the current workforce travel over 50kms to work.

4. Disability, Carers and Voluntary activities

Census 2006 is the first recording of details of people with a disability, Carers or Volunteers by the CSO.

Disability: The National average of persons with a disability in a county is 9.3% of the population. In this regard, Co. Wexford is slightly above the national average with 9.6% of the population with a disability or almost 1 in 10 persons in the county having some form of debilitating condition.

Almost 6,000 people in Co. Wexford suffer from ‘a condition that substantially limits one or more basic physical activities’ equating to almost 5% of the population.

Carers: There are 4,825 Carers in Co. Wexford according to Census 2006, equating to 4.7% of the population. 2545 of these give between 1-14 hours of unpaid help, 1430 of these give 43 hours or over of unpaid help to others. The national average of number of

Carers per county population is 4.8%. The highest proportion of population of those caring for others is in Galway county and Mayo, where 5.5% of the population are Carers.

Voluntary activity: 17,293 people or almost 17% of the population over 15 years in Co. Wexford are involved in one or more areas of voluntary activity, with 85,218 people not involved in any voluntary activity. In Co. Waterford, 14,511 people or 17% of the population over 15 years are involved in at least one form of voluntary activity and for Co. Kilkenny, 12,435 or 18.1% of the population are involved in at least one voluntary activity, the highest proportion in the region. South Tipperary host the next highest proportion of volunteers in the region with 11483 or 17.5% of the population involved in at least one voluntary activity.

Introduction

Recent Census 2006 releases have accentuated the changing socio-economic profile of the county. Recent releases include the areas of Education and Qualifications, Skills and Occupations, Disability and the 'social capital' areas of Voluntary activity and Carers. Census 2006 has been the first Census to take an in-depth look at the area of Disability- investigating the type of disability in detail and documenting the number of people in each Electoral area with a disability, the type. The number of persons with the responsibility of caring for others has also been documented for the first time in Census 2006. In an effort to document and harness the extent of social capital in our local areas, the number of Volunteers and area of involvement has been documented for the first time in Census 2006, the results for which are included in this report. Travel to work, school and College is also recorded in this report.

Census Releases

- 1. Skills and occupations**
- 2. Education- area of qualification**
- 3. Travel to work school and college**
- 4. Disability, Carers and Voluntary activities**

1. Skills and Occupations

The following Table gives a detailed breakdown of the Occupational group of the population of the South East. While accounting for almost 18% of the occupations of residents of Co. Wexford in 1996, this has been reduced by almost a third as now only 6.9% of Wexford's workforce are currently employed within the Farming, Fishing and Forestry area. The sector still employs over 10% of the workforce in South Tipperary. The largest area of employment for Co. Wexford workers is the Clerical, Managing and Government area with 14.7% of the workforce now employed within the area. This is also the highest proportion in the South East employed in the sector. The next most common area of employment for Co. Wexford is now the Sales and Commerce area. The Services area has also grown in the last Census period, with Co. Wexford proportionally now the largest employer in the sector within the South East.

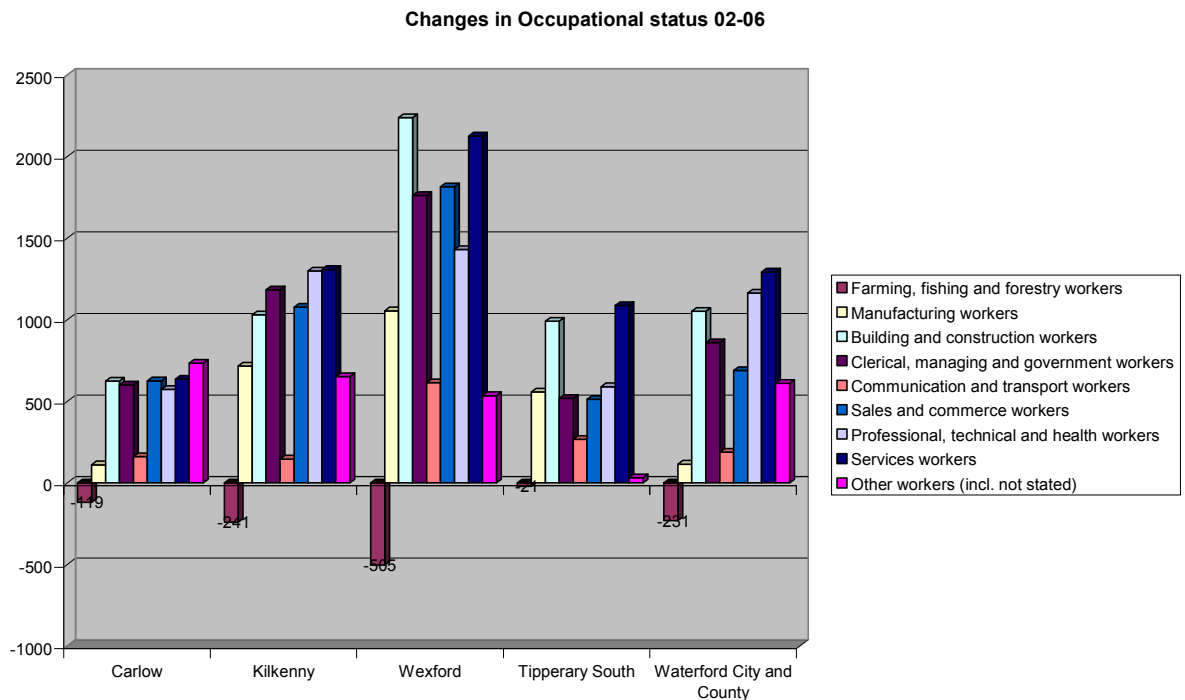
Table 1 : Occupational Profile of South East region 2006

2006	Farming, fishing and forestry workers	Manufacturing workers	Building and construction workers	Clerical, managing and government workers	Communication and transport workers	Sales and commerce workers	Professional, technical and health workers	Services workers	Other workers (incl. not stated)
Carlow	6.1%	14.6%	10.2%	13.8%	5.2%	13.4%	13.9%	10.3%	12.4%
Kilkenny	7.8%	13.0%	10.0%	14.6%	4.6%	13.2%	15.8%	11.4%	9.6%
Wexford	6.9%	13.3%	13.2%	14.7%	5.6%	13.8%	12.7%	11.8%	8.1%
South Tipperary	10.2%	15.4%	10.4%	12.6%	5.0%	11.8%	13.5%	11.2%	9.8%
Waterford	5.2%	16.1%	8.4%	14.6%	4.5%	12.8%	15.4%	10.6%	12.3%

While the structure of the workforce has changed in recent years, the next chart shows in detail as to where the changes have occurred in the region. Overall, the workforce has grown by over 10,000 in the years 2002-2006, and this increase of almost a quarter of the workforce from 2002 is bound to affect the structure of the workforce.

The following chart clearly indicates this changing Occupational structure of the county and region.

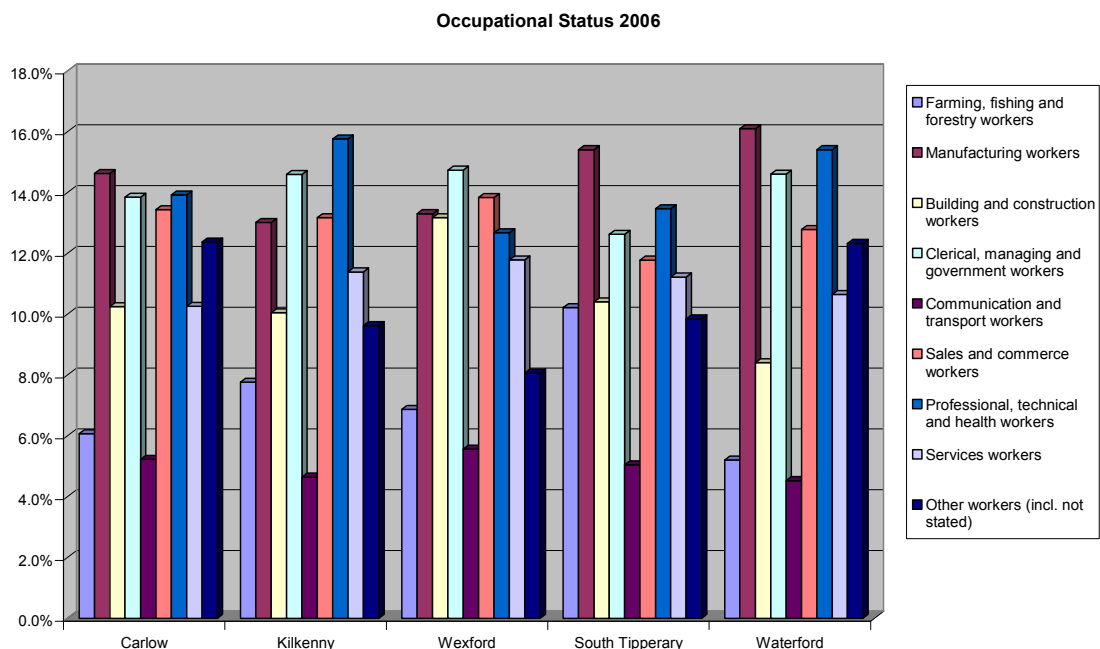
Chart 1: Changes in Occupational status 2002-2006



The chart above shows the change in occupational status which took place from 2002 to 2006 in Co. Wexford. As expected, the number of people working within the county has increased, as shown by the total number at work. There are 10,762 more people at work than there were 4 years ago in the county. The occupational area which has decreased most in numbers employed is the Farming, Fishing and Forestry are which decreased by 585 in Co. Wexford in that time.

The most substantial increase was in the Building and Construction area which increased by 2238 persons within the county. The number of Services workers increased by 2125 and the number of Sales and Commerce workers within the county increased by 1815. This indicates the current dependence on the Building and Construction Industry within the county but also clearly demonstrates the rise in other occupations such as the rise in the Services Industry and the Sales and Commerce Industry.

Chart 2: Occupational Status 2006



Occupational Profile of Co. Wexford Towns

Table 2: Broad Occupational Structure of Co. Wexford Towns, 2006

The table below indicates the employment and occupational structure of the main towns of Co. Wexford. The rural location of Bunclody- Carrickduff area is reflected with the highest population involved in Farming, Forestry and Fishing living in the area. For the Manufacturing industry, the largest proportional employment is also in the Bunclody-

	Farming, fishing and forestry workers	Manufacturing workers	Building and construction workers	Clerical, managing and government workers	Communication and transport workers	Sales and commerce workers	Professional, technical and health workers	Services workers	Other workers (incl. not stated)
Wexford	0.8%	12.6%	11.7%	15.3%	4.9%	17.4%	13.7%	15.6%	8.0%
Enniscorthy	1.4%	14.4%	15.9%	11.2%	4.9%	15.9%	11.1%	15.2%	10.0%
New Ross	0.9%	16.2%	13.0%	9.9%	6.4%	12.9%	10.4%	9.5%	20.8%
Gorey	1.5%	13.9%	14.0%	14.6%	6.0%	16.0%	12.3%	12.7%	9.0%
Bunclody-Carrickduff	2.0%	23.7%	12.9%	10.5%	5.0%	12.9%	10.9%	15.5%	6.7%
Castlebridge	1.1%	14.8%	13.0%	19.8%	7.5%	14.4%	12.8%	12.5%	4.1%

Carrickduff area, with 23.7% of the workforce employed within the sector, living in the town. 16.2% of the New Ross town population are also employed within the Manufacturing Industry.

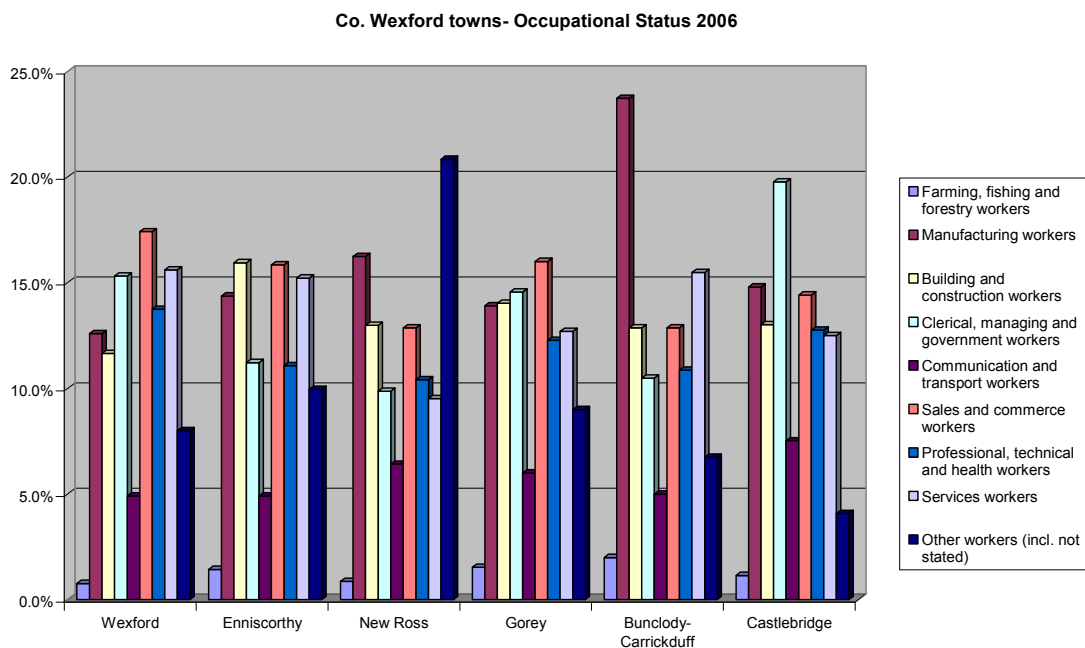
The largest proportion of those employed within the construction industry live within the Enniscorthy town area, followed by Gorey, New Ross and Castlebridge residents. 19.8% of Castlebridge residents work within the Clerical, Management and Government area, the largest proportion for that sector, followed by Wexford (15.3%) and Gorey (14.6%). Wexford and Gorey are the most common location for Sales and Commerce workers and

Wexford and Castlebridge most common for Professional, Technical and Health workers.

Wexford, Enniscorthy and Bunclody are the most common locations for workers in the Services Industry.

The Chart below illustrates clearly the differing occupational structure across Co. Wexford Towns.

Chart 3: Occupational Status of Co. Wexford status 2006



2. Education –

Area of qualification 2006

The Social sciences, Business and Law areas are now one of the most popular areas of Third level education, and this is reflected in the table below which demonstrates the qualification area of those qualified to third level in Co. Wexford, compared to those qualified in the same area in 2002. This table therefore shows the level of education of our current expanded workforce, including persons migrating into the county and those who have gained a Third level qualification in the years from 2002 to 2006.

Another popular area of those qualified to Third level is in the Engineering, Manufacturing and Construction areas. The area of Health has also proven to be popular for those with Third Level qualifications.

The table below shows the qualification area of those qualified to Third level in County Wexford, compared to the qualification area of those resident in the county in 2002.

Table 3: Third level Education 2006

	2006	2002	Change from 2002 to 2006
Education	1697	1154	543
Humanities/Arts	1363	971	392
Social Sciences/Business/Law	3027	1579	1448
Life Science/Physical Science/Mathematics/Statistics	672	602	70
Computing	1051	707	344
Engineering/Manufacturing/Construction	2255	1145	1110
Agriculture/Veterinary	927	737	190
Health	2545	1826	719
Social Services- Not directly comparable	747		
Services/Other Third level- Not directly comparable	1427		
Not stated	224	113	111
Multiple subjects	2223	1600	623
Total	18158	12510	5648

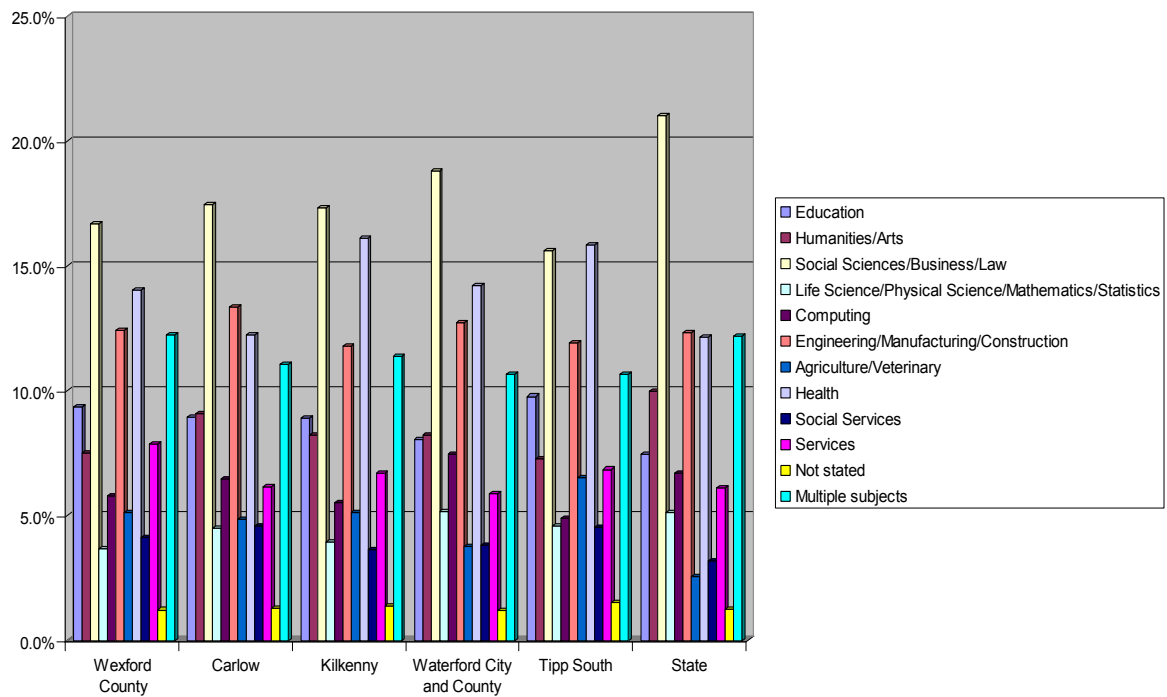
Areas of Third level Qualification in the region

The chart below compares the Third level qualification area of the region.

The most popular areas of qualification in the region are the Social sciences, Business and Law areas, followed by the area of Life sciences, Physical science and Mathematical science. Co. Wexford has one of the highest proportions of those qualified in the region to Third level in the Services area, reflecting the changing workforce structure.

Education is still comparatively and proportionally high, as is the Health area. The high proportion of those qualified in mutiple subjects is also high, a positive pointer towards an adaptable workforce.

Chart 4: Third Level qualifications of South East, 2006.



3. Travel to work

Means of travel to work

The use of the motor car has increased in usage since Census 2002 with 33,044 people now driving their car to work in Co. Wexford, a further 3722 people are passengers in a motor car. 6341 people use a lorry or van in Wexford to get to work, while the incidence of working from home has increased in Census 2006 to 4232 people in the county. The use of the train is still low in the region with Co. Carlow recording the highest usage, but still at only 169 people.

Table 4: Means of Travel to work in the South East, 2006

	On foot	Bicycle	Bus, Minibus or coach	Train, DART or LUAS	Motor cycle or scooter	Motor car driver	Motor car passenger	Lorry or van	Other means	Work mainly at or from home	Not stated	Total
Wexford	5851	363	633	127	268	33044	3722	6341	216	4232	546	55,343
Carlow	2472	266	364	169	84	12748	1471	2225	76	1573	312	21760
Kilkenny	3933	594	555	97	182	24183	2294	3478	170	3364	485	39335
Waterford	5362	608	1014	59	331	28626	3121	3006	172	2521	724	45544
South Tipperary	4109	367	489	62	160	21595	2382	2818	145	2903	340	35370

Comparing the proportional Means of travel in the region in 2006, almost 67% of the population either drive or are a passenger in a car driving to work. The highest recorded proportion of Car users are in Co. Waterford with almost 70% of those working using the car as their primary means of travel. Co. Waterford also has the highest proportion of those travelling to work on foot.

The proportion of those using a Lorry or van in Co. Wexford is now 11.2% of the working population and almost 7.6% work from home. Co. Kilkenny has the highest proportion of those working from home at almost 9%.

Table 5: Proportional Means of Travel in the South East, 2006

	On foot	Bicycle	Bus, Minibus or coach	Train, DART or LUAS	Motor cycle or scooter	Motor car driver	Motor car passenger	Lorry or van	Other means	Work mainly at or from home	Not stated
Wexford	10.6%	0.7%	1.1%	0.2%	0.5%	59.7%	6.7%	11.2%	0.4%	7.6%	1.0%
Carlow	11.4%	1.2%	1.7%	0.8%	0.4%	58.6%	6.8%	10.2%	0.3%	7.2%	1.4%
Kilkenny	10.0%	1.5%	1.4%	0.2%	0.5%	61.5%	5.8%	8.8%	0.4%	8.6%	1.2%
Waterford	11.8%	1.3%	2.2%	0.1%	0.7%	62.9%	6.9%	6.6%	0.4%	5.5%	1.6%
South Tipperary	11.6%	1.0%	1.4%	0.2%	0.5%	61.1%	6.7%	8.0%	0.4%	8.2%	1.0%

Changes in Means of Travelling to work 2002-2006

The following Charts illustrates the changing means of traveling to work in Co. Wexford from 2002 to 2006. When looking at this chart it should be remembered that the workforce has increased by over 10,000 in the time period, so the fact that proportionally many categories remain the same is interesting in itself.

Comparing the charts we can clearly see the increase in motor car usage with 60% now driving to work and another 7% traveling as a passenger, compared to 56.3% and 7.8% in 2002, respectively. The proportion traveling to work on foot has remained unchanged at 11%, as with the proportion traveling by bus or train, and those traveling by bicycle. The proportion of those travelling by Lorry or van has increased by just over .5%.

Chart 5 : Means of Travel to work 2002

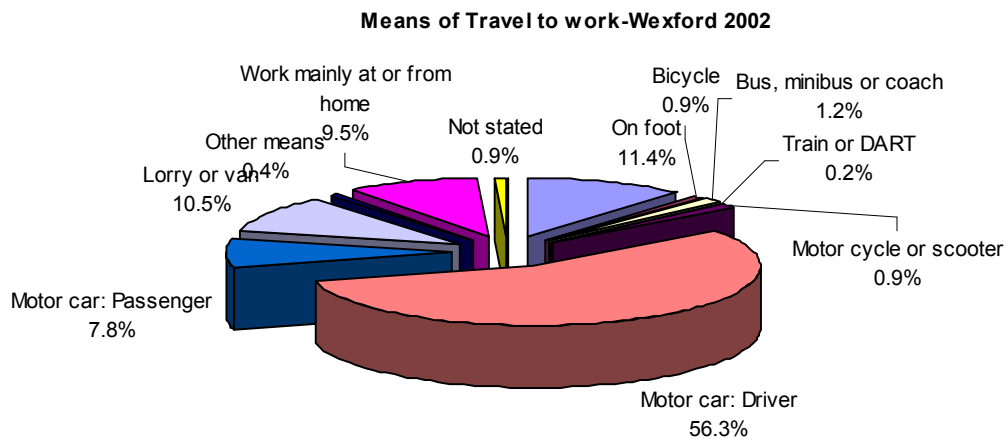
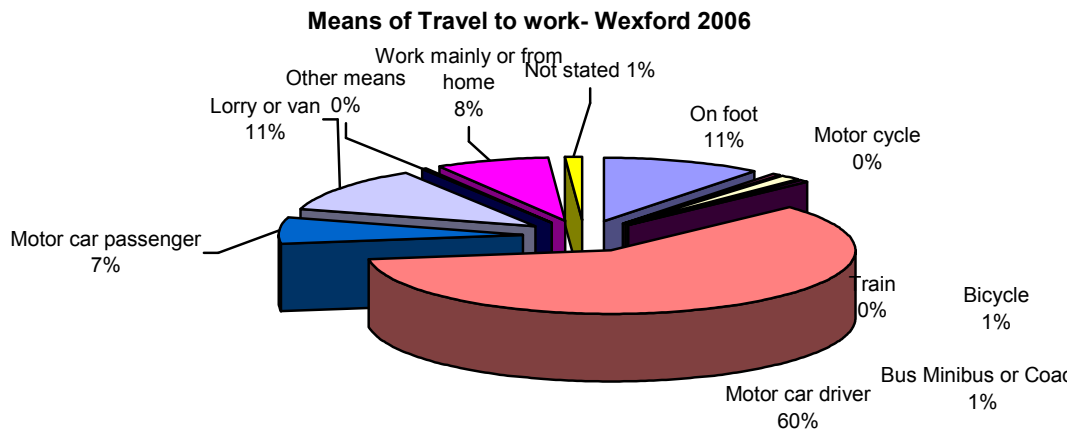


Chart 6: Means of Travel to work 2006



Distance travelling to work

The following chart illustrate the changing distances travelled to work, Census 2002 figures have been adapted to the metric system for comparison purposes and therefore may not directly relate to the results of Census 2006.

The proportion of people traveling over 24kms has increased to 25%, or a quarter of the workforce traveling to work. 12% of the current workforce travel over 50kms to work.

Chart 7: Distance travelled to work 2002

Distance Travelled to work 2002- Co. Wexford
Source: CSO 2004

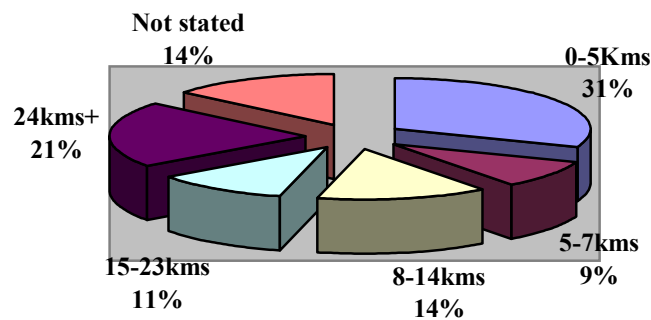
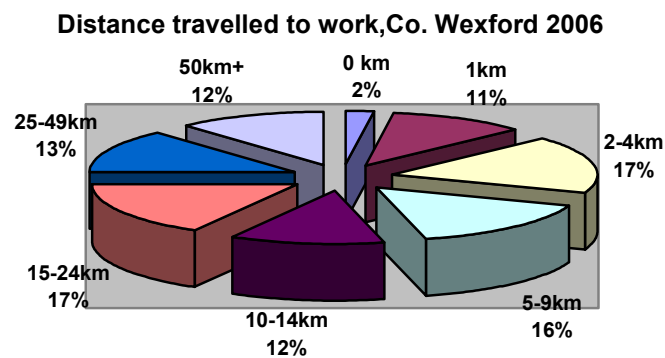


Chart 8: Distance travelled to work 2006



3. Disability, Carers and Volunteers

Disability

Census 2006 is the first recording of details of people with a disability, Carers or Volunteers by the CSO. A detailed choice of disability was given in the respondent Census form and these are now classified into the type of disability. The table should be interpreted with the fact that more than one disability could be selected, indicating that 12,681 persons have *at least* one of the disabilities listed. The National average of persons with a disability in a county is 9.3% of the population. In this regard, Co. Wexford is slightly above the national average with 9.6% of the population with a disability or almost 1 in 10 persons in the county having some form of debilitating condition. On a regional level, 9.4% of the population of Co. Carlow have a disability, 9.1% of Co. Kilkennys' population have a disability, for Co. Waterford , 9.5% of the population have a disability and the highest proportion of the region, 10.6%, was found in South Tipperary.

The table below details the number of people in Co. Wexford by the type of disability suffered from. It should be noted that respondents could suffer from more than one category or type of disability of which they were eligible to respond. The table shows that almost 6,000 people in Co. Wexford suffer from 'a condition that substantially limits one or more basic physical activities' equating to almost 5% of the population.

Table 6: Type of Disability 2006

Type of Disability	Co. Wexford	% of persons with a disability
Blindness, deafness or a severe vision or hearing impairment	2503	7.1%
A condition that substantially limits one or more basic physical activities	5737	16.3%
Difficulty in learning, remembering or concentrating	3568	10.1%
Difficulty in dressing, bathing or getting around inside the home	2548	7.2%
Difficulty in going outside the home alone	3588	10.2%
Difficulty in working or attending school/college	4629	13.1%
Learning or Intellectual disability	2397	6.8%
Psychological or emotional condition	1769	5.0%
Difficulty in participating in other activities	4298	12.2%
Other including chronic illness	4250	12.0%
Total disabilities	35287	100%
Total people with a disability	12681	
People with a disability as a % of Total persons in the county	9.6%	

The Census also recorded the number and proportion of those with a disability and living higher proportion of these are female. The national average is 20.9%.

The table below shows the population of Co. Wexford towns and the incidence of persons with a disability in each town. Enniscorthy has the highest proportion of people with a disability in the county with 12.5% of the population of the town, or 1 person in 8, having at least one debilitating condition. 11.8% of the population of Wexford town have at least one disability.

Table 7: Persons with a disability in Co. Wexford Towns, 2006

	Wexford	Enniscorthy	New Ross	Gorey	Bunclody-Carrickduff	Castlebridge
Total persons	18163	9538	7709	7193	1863	1624
Total persons with a disability	2143	1193	719	670	170	125
% of Total persons	11.8%	12.5%	9.3%	9.3%	9.1%	7.7%

Carers

As stated above, Census 2006 was the first Census to enumerate Carers within our society, classified by the number of unpaid hours per week of unpaid help given to others, by those over 15 years. There are 4,825 Carers in Co. Wexford according to Census 2006, equating to 4.7% of the population. 2545 of these give between 1-14 hours of unpaid help, 1430 of these give 43 hours or over of unpaid help to others. The national average of number of Carers per county population is 4.8%. The highest proportion of population of those caring for others is in Galway county and Mayo, where 5.5% of the population are Carers.

The table below indicates the level of Carers in the South East region.

Table 8: No. of Carers in the South East region, 2006

County	Total persons over 15 years	Total Carers	1-14 hours	15-28 hours	29-42hours	43 or more hours per week	Carers as a % of total persons
Wexford	102,511	4825	2545	542	308	1430	4.7%
Carlow	39,779	1677	932	181	107	457	4.2%
Kilkenny	68705	3434	2005	343	200	886	5.0%
South Tipperary	65693	3263	1818	345	188	912	5.0%
Waterford	85544	4131	2462	459	247	963	4.8%

Counties Kilkenny and South Tipperary have the highest proportion of Carers in the region at 5% of the population. Some correlation may be found with the number of Carers and the incidence of disability in a county as South Tipperary had the highest proportion of people with disabilities, however Co. Kilkenny had the lowest rate in the region.

Volunteers

As with other elements of Carers and Disability, the extent of Voluntary work in the country has been documented comprehensively for the first time through Census 2006 in an effort to chart the prevalence of this element of social capital.

The table below compares the counties of the South east region in the number of people involved in Voluntary activity, by the type of activity, of persons over 15 years.

The table shows the number of volunteers across the region, with 17,293 people or almost 17% of the population in Co. Wexford involved in one or more areas of voluntary activity, with 85,218 people over 15 years not involved in any voluntary activity. In Co. Waterford, 14,511 people or 17% of the population over 15 years are involved in at least one form of voluntary activity and for Co. Kilkenny, 12,435 or 18.1% of the population are involved in at least one voluntary activity, the highest proportion in the region. South Tipperary are the next highest proportion of volunteers in the region with 11483 or 17.5% of the population involved in at least one voluntary activity.

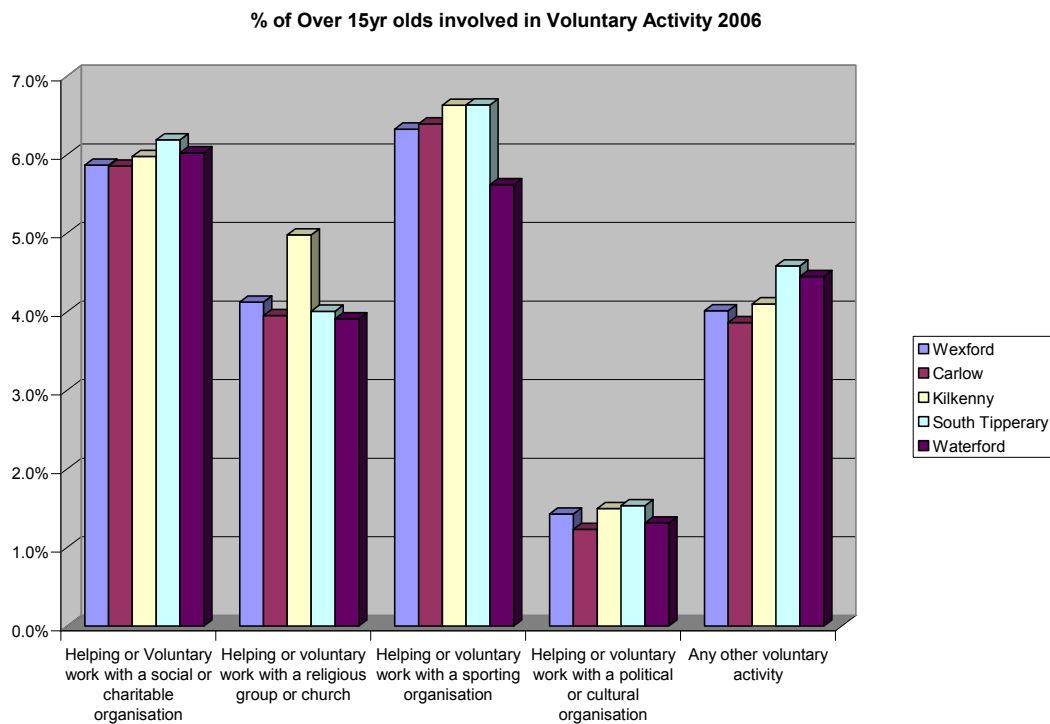
Table 9: Voluntary activity in the South East region, 2006

County	Helping or Voluntary work with a social or charitable organisation	Helping or voluntary work with a religious group or church	Helping or voluntary work with a sporting organisation	Helping or voluntary work with a political or cultural organisation	Any other voluntary activity	Total persons in one or more voluntary activity	Persons not involved in voluntary work, including those not stated
Wexford	6014	4229	6484	1463	4114	17293 (16.9%)	85218
Carlow	2329	1572	2543	490	1537	6534 (16.4%)	33245
Kilkenny	4106	3421	4555	1027	2818	12435 (18.1%)	56270
South Tipperary	4066	2632	4359	1007	3011	11483 (17.5%)	54210
Waterford	5154	3347	4808	1122	3805	14511 (17%)	71033

Proportional Voluntary activity across the South East region

The Chart below demonstrates the relative level of voluntary activity across the region by indicating the proportional involvement of those over 15 years involved in one or more activities. South Tipperary has the highest proportion of those involved in voluntary activity in a social or charitable organization, followed by Waterford or Kilkenny. Kilkenny has the highest proportion of those helping with a religious group or church. Kilkenny and South Tipperary have the highest proportion of those helping with a sporting organization, perhaps a cause and a result of their sporting achievements. Co. Kilkenny and South Tipperary have the highest proportion of those volunteering with a political or cultural organisation, and also for ‘other’ voluntary activity.

Chart 9: Proportion of over 15 year olds involved in Voluntary activity, 2006



The table below details the level of voluntary activity within the region.

Table 10: Percentage of persons over 15 years involved in Voluntary activity in the South East region, 2006

County	Helping or Voluntary work with a social or charitable organisation	Helping or voluntary work with a religious group or church	Helping or voluntary work with a sporting organisation	Helping or voluntary work with a political or cultural organisation	Any other voluntary activity
Wexford	5.9%	4.1%	6.3%	1.4%	4.0%
Carlow	5.9%	4.0%	6.4%	1.2%	3.9%
Kilkenny	6.0%	5.0%	6.6%	1.5%	4.1%
South Tipperary	6.2%	4.0%	6.6%	1.5%	4.6%
Waterford	6.0%	3.9%	5.6%	1.3%	4.4%

Conclusion

The recent releases have given an interesting picture of our current expanded workforce, detailing the occupations, skills and qualifications of those resident within the county and the distances travelled to get to work.

New information on the level and scale of disability, extent of voluntary activity and number of Carers within the county have also given us a more detailed insight into the community and social involvement of our residents and enables us to derive comparisons in this area with other counties, delivering key actionable information for many agencies and organisations of the County Development Board.

For more details or a copy of any of the reports included, please consult the Central Statistics Office website on www.cso.ie/Census2006

Siobhan O'Neill

Research Officer

Wexford County Development Board

©Wexford County Development Board 2007