



The National Spatial Strategy

Making it Work in Wexford

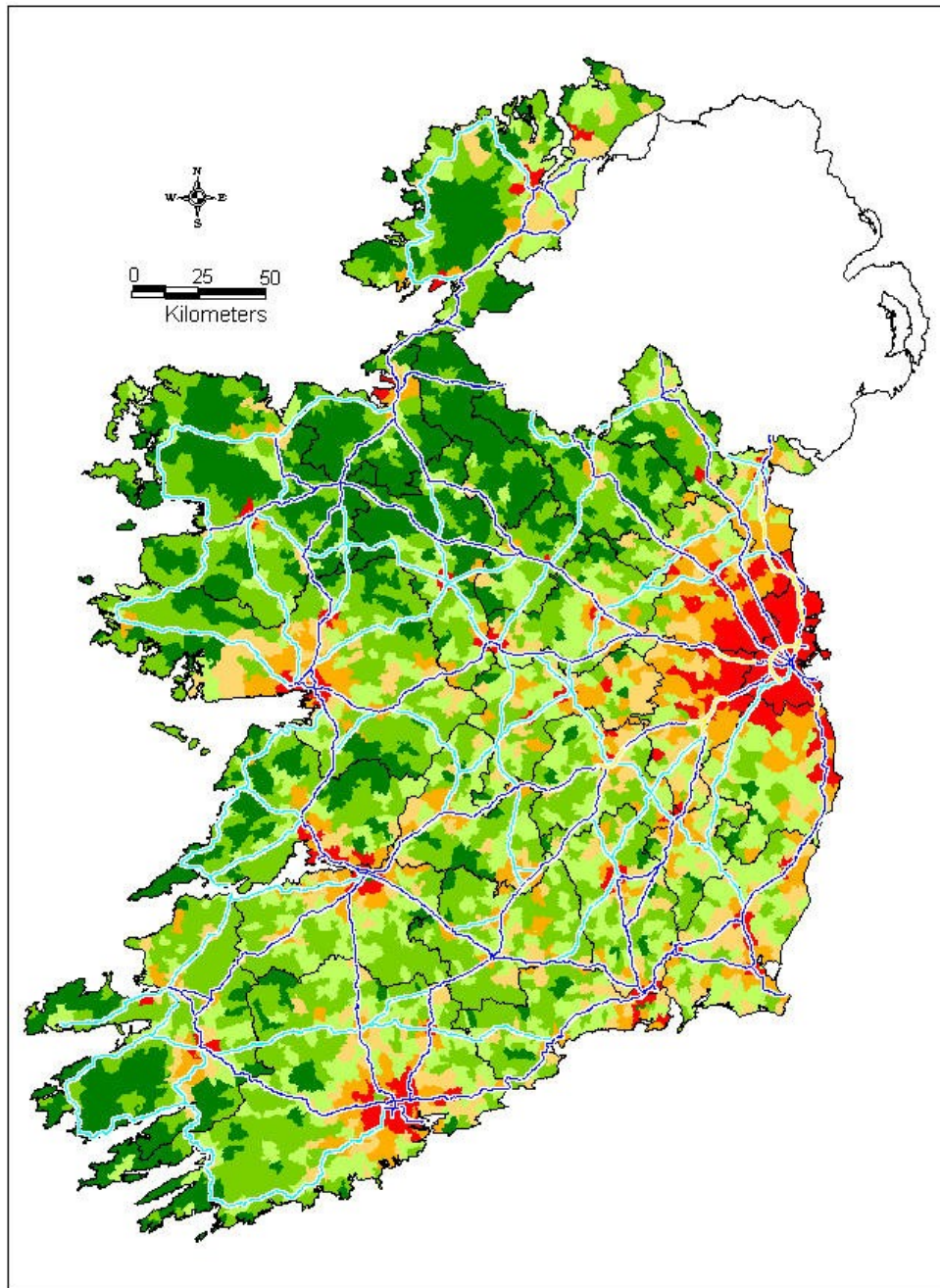
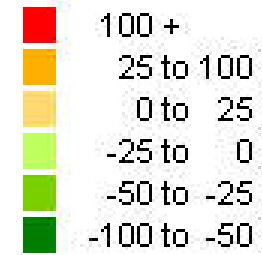


Part 1

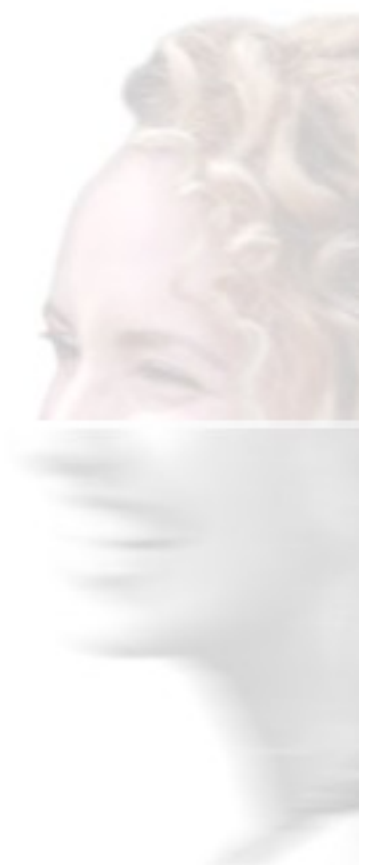
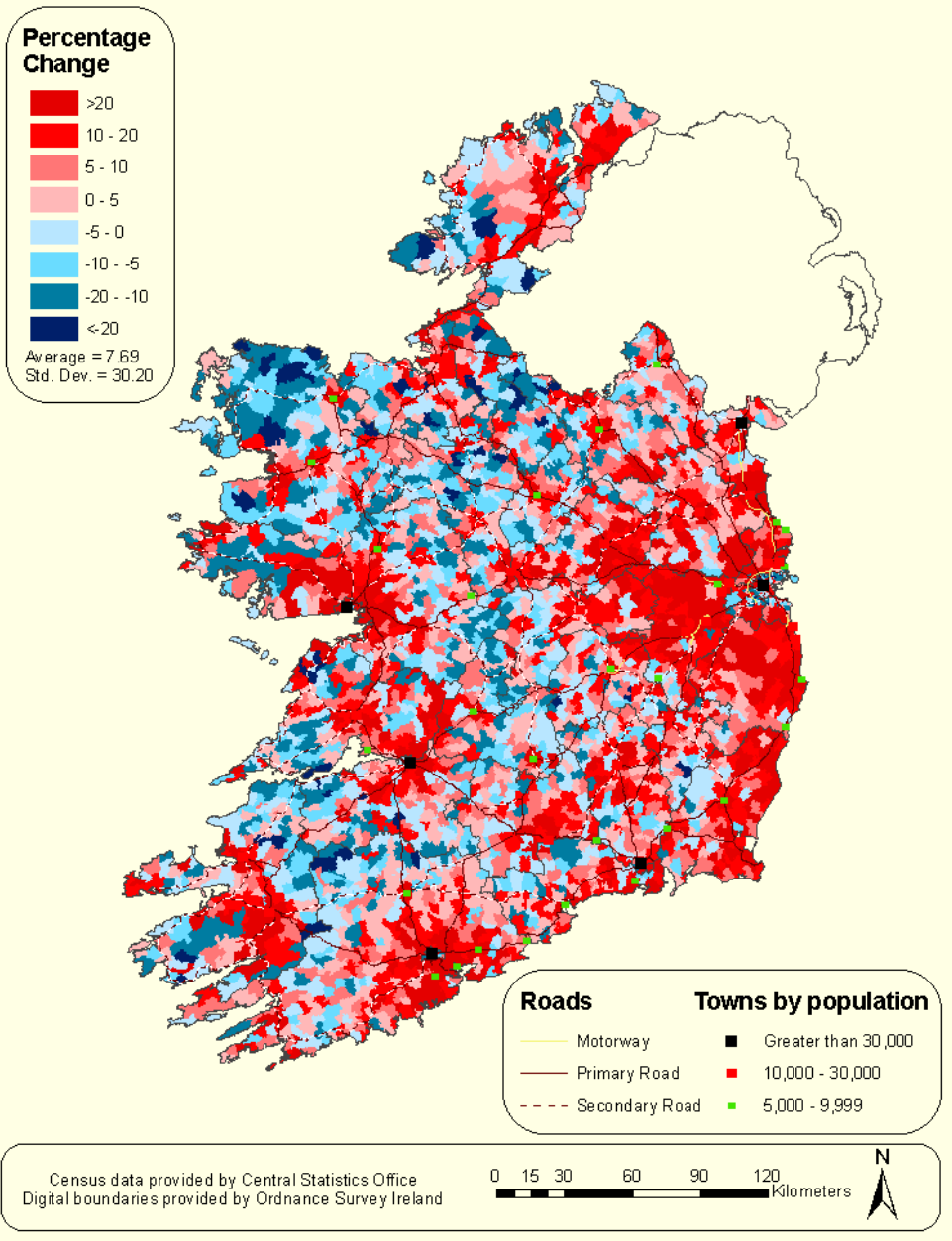
Why do we need Spatial Planning?

What progress are we making?

% Pop. Change, 1926-1996



Percentage Population Change 1991-2002

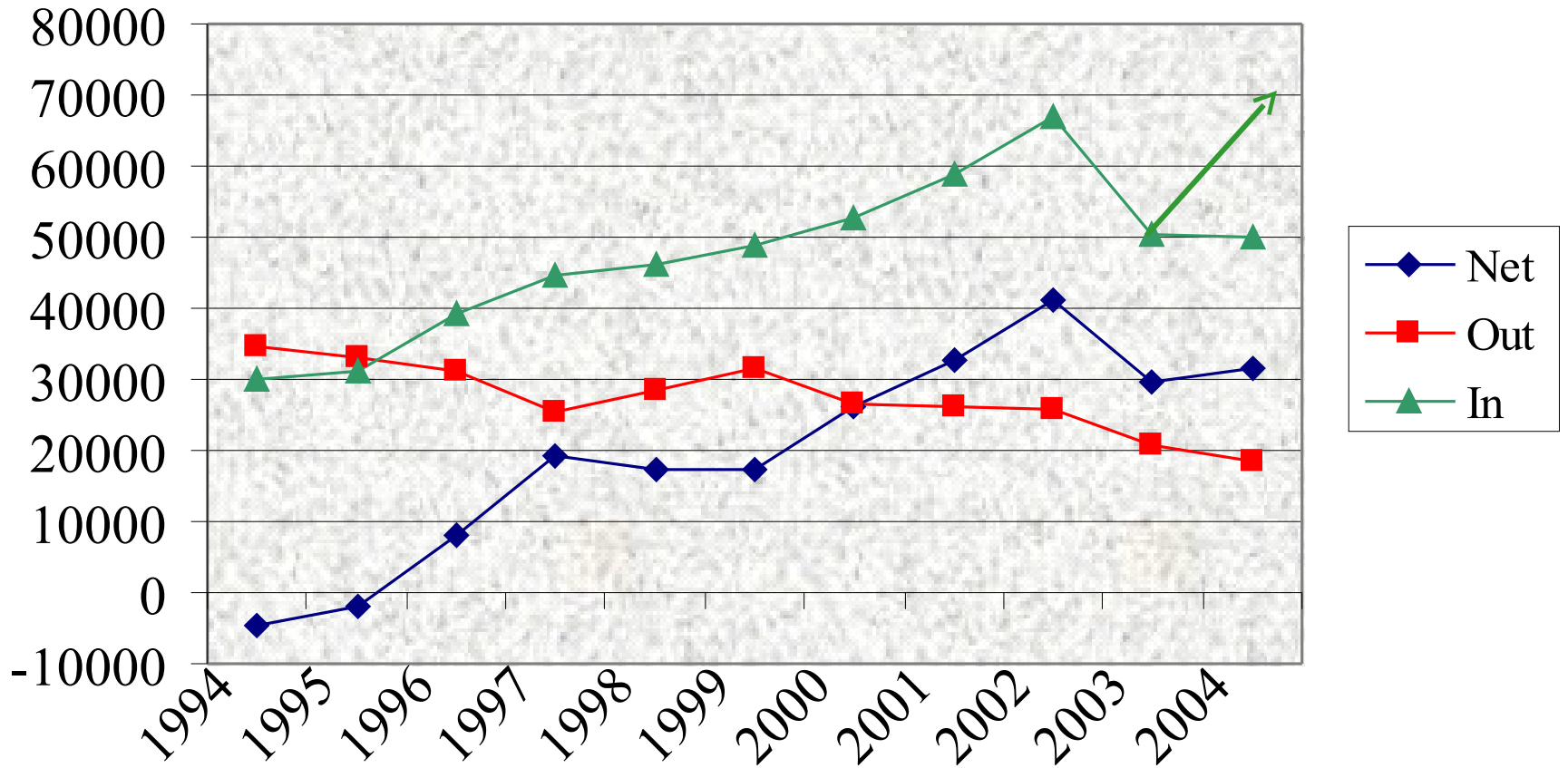


CSO 2021 Regional Population Forecasts

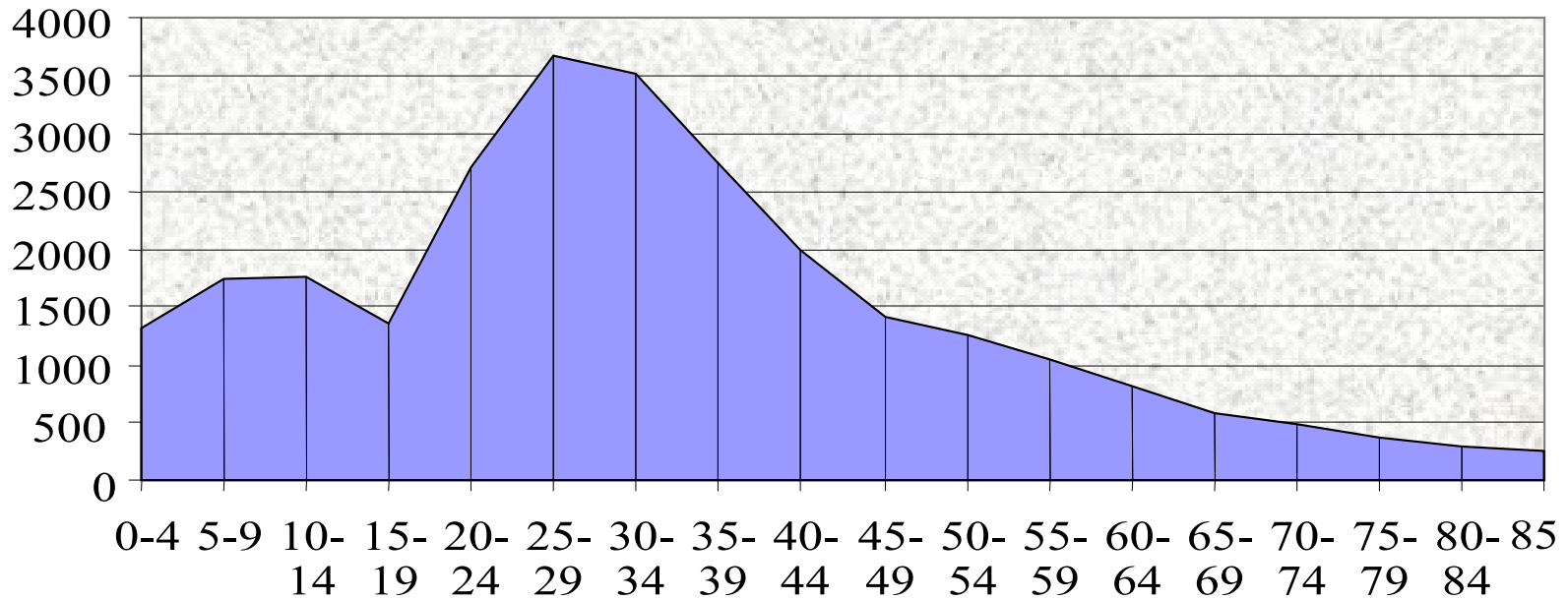
(Business as usual – no spatial policy intervention)

Region	Pop. 2002	Pop. 2021	% change
GDA	1,535	2,063	34.4
Southeast	424	537	26.7
Southwest	580	705	21.6
MidWest	340	410	20.6
Border	423	546	29.1
Midland	225	296	31.6
West	380	513	35.0
Ireland	3,917	5,070	29.4

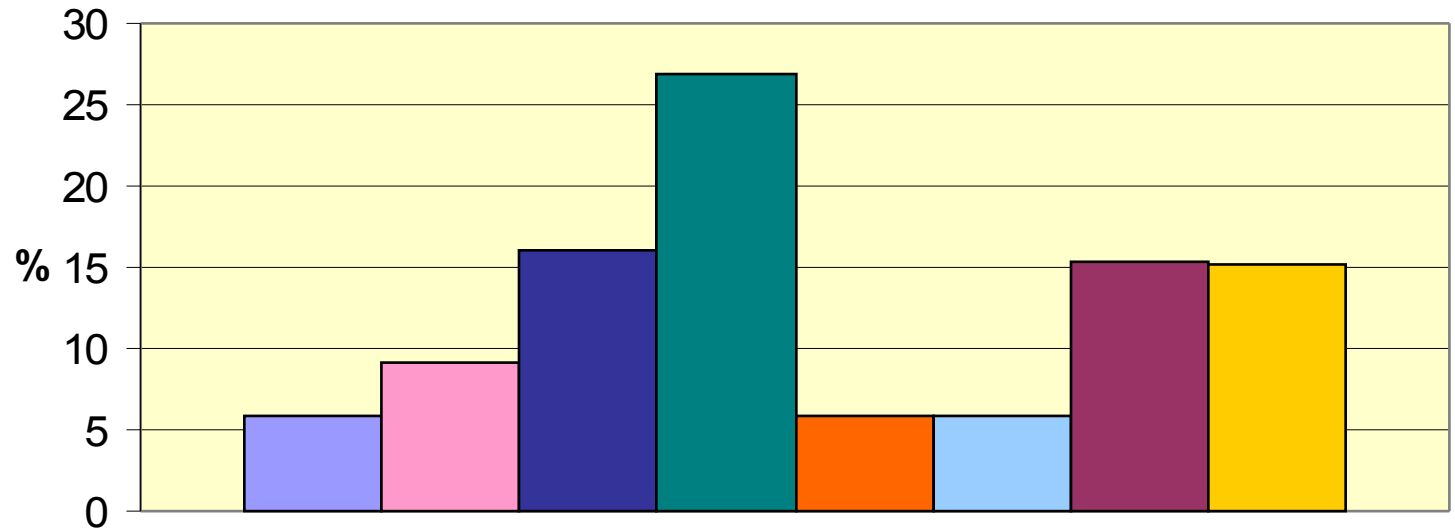
Immigration and Emigration Trends 1994-2004



TOTAL NON-IRISH POPULATION BY AGE GROUP, 2002



Percentage of total employment by sector



■ Agriculture & Mining

■ Manufacturing

■ Transport & Communications

■ Professional Services

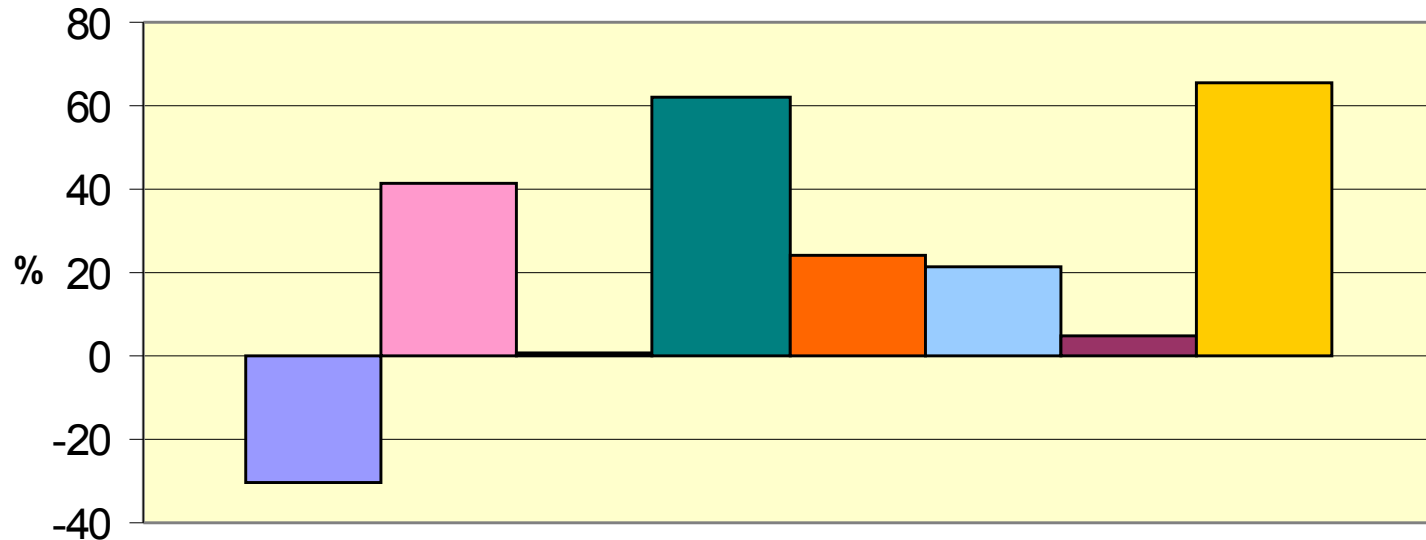
■ Building & Construction

■ Commerce

■ Public Administration & Defence

■ Other including 'not stated'

Percentage change in employment by sector



■ Agriculture and Mining

■ Building and Construction

■ Manufacturing

■ Commerce

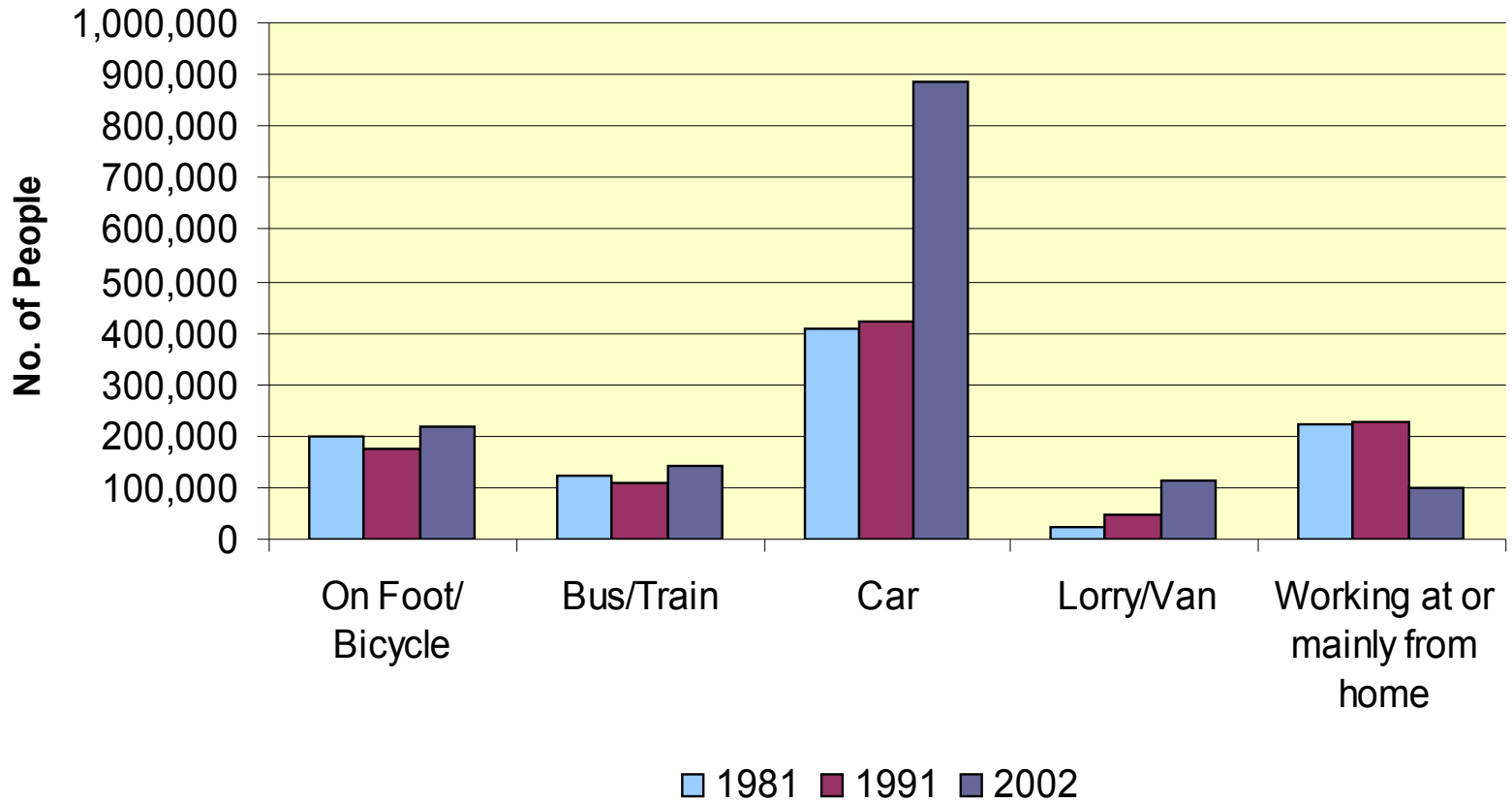
■ Transport & Communications

■ Public Administration & Defence

■ Professional Services

■ Other including 'not stated'

Travel to Work Mode of Transport

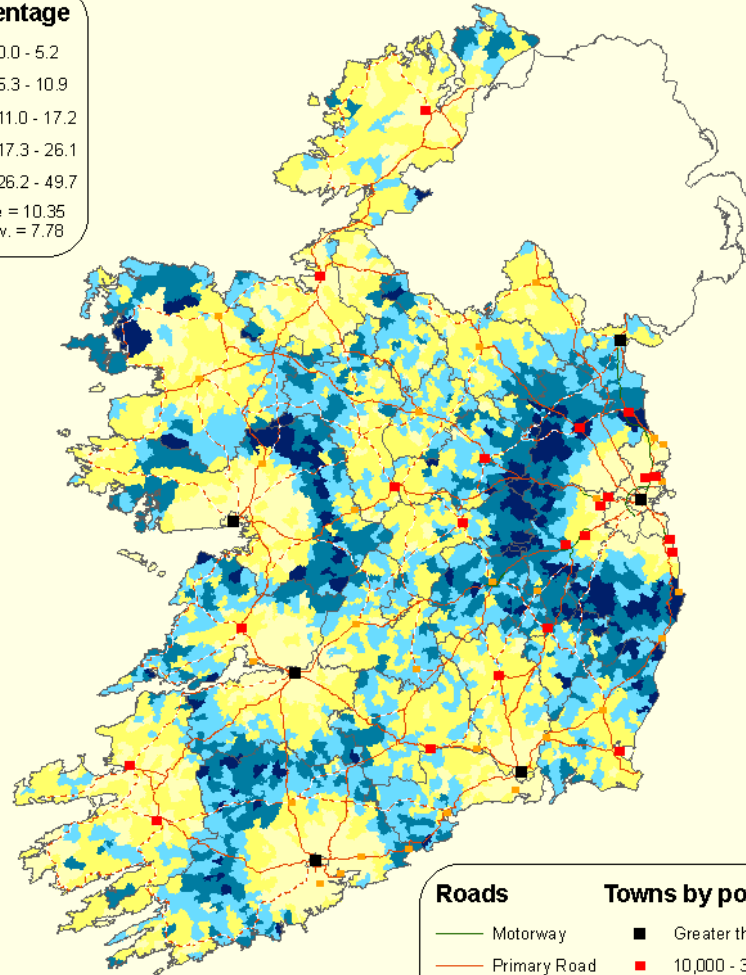


Persons travelling 30+miles to work as percentage of total at work, 2002

Percentage

- 0.0 - 5.2
- 5.3 - 10.9
- 11.0 - 17.2
- 17.3 - 26.1
- 26.2 - 49.7

Average = 10.35
Std. Dev. = 7.78



Roads

- Motorway
- Primary Road
- Secondary Road

Towns by population

- Greater than 30,000
- 10,000 - 30,000
- 5,000 - 9,999

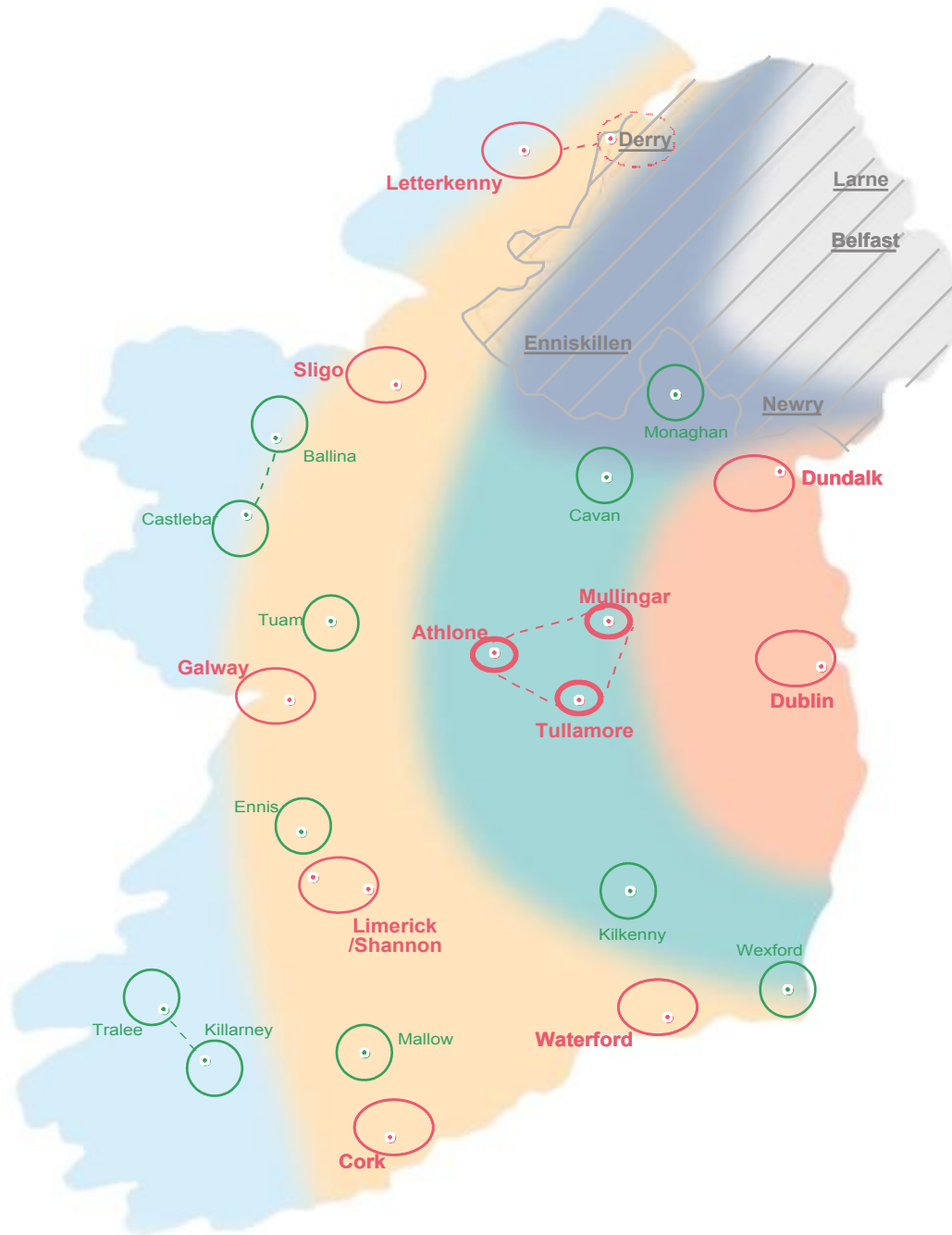
Reproduced from Ordnance Survey Ireland Permit No. MP000405
Source Central Statistics Office Census SAPS Microdata File
© Government of Ireland and Ordnance Survey Ireland

0 15 30 60 90 120 Kilometers



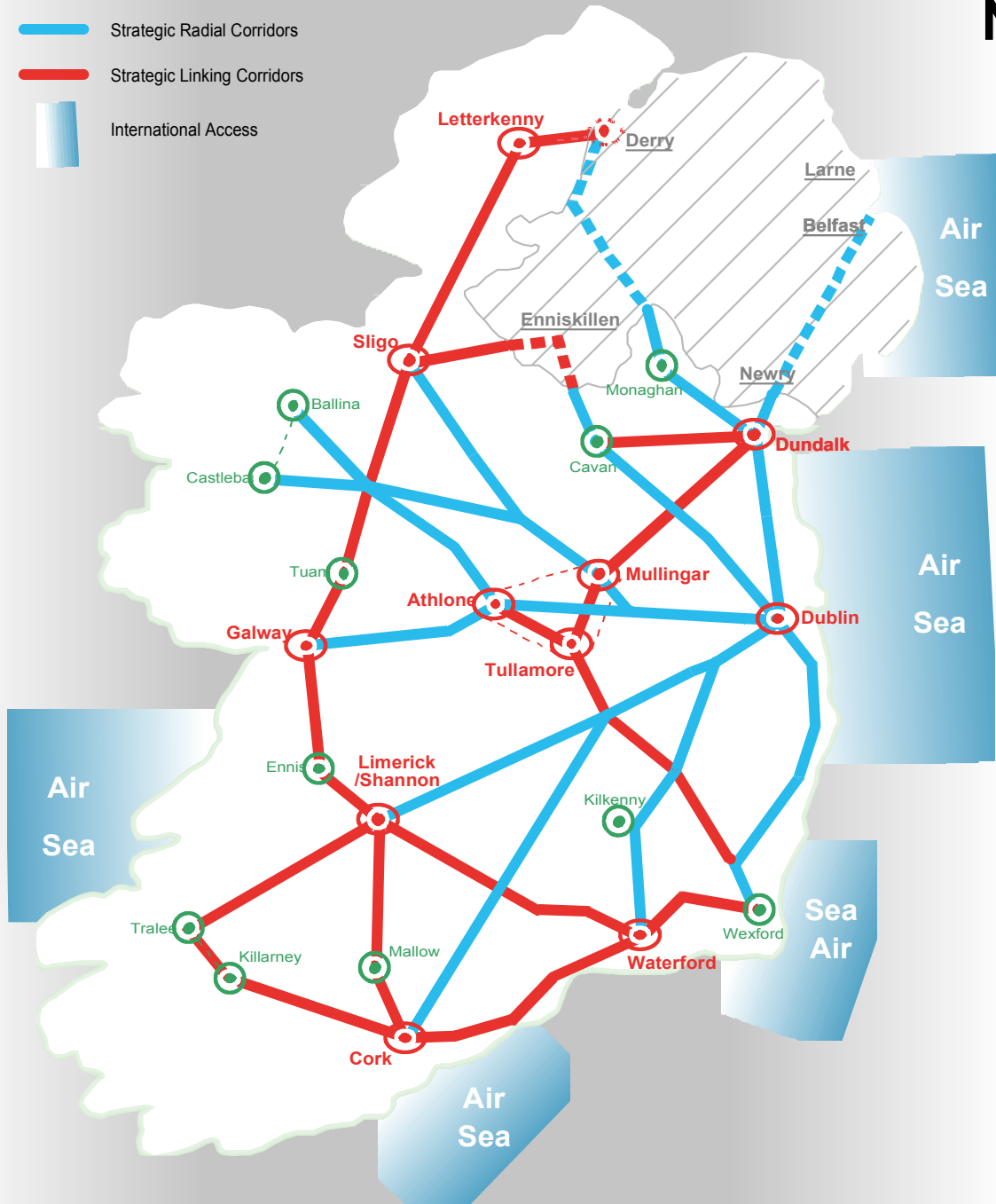


Ireland - International Spatial Context

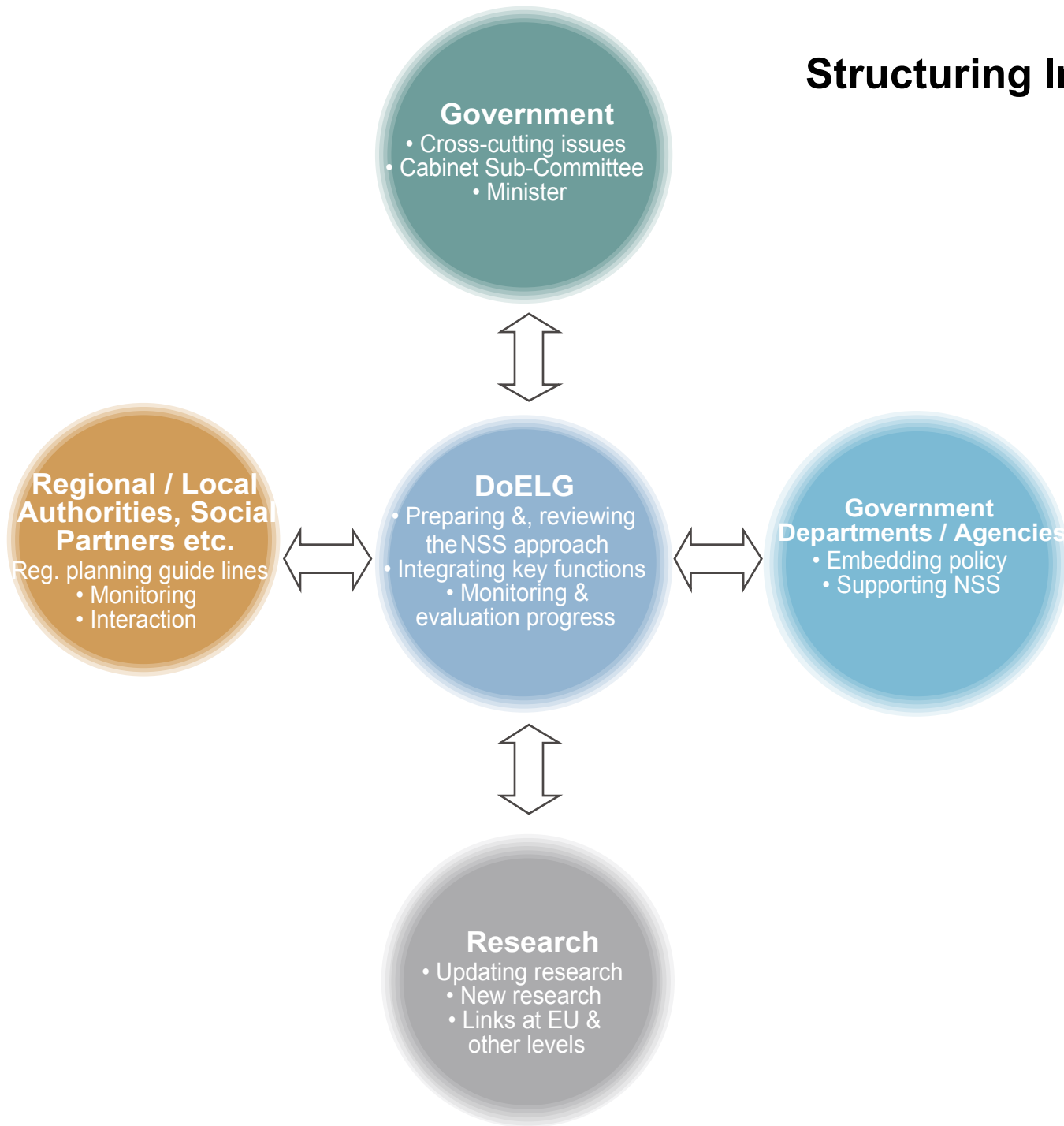


National Transport Network

- Strategic Radial Corridors
- Strategic Linking Corridors
- International Access



Structuring Implementation Functions



What Implementation Means + for Wexford

- **Accelerating regional economic and population growth - Wexford Town & Environs as a focal point in the SE, as well as the Gateway of Waterford - other towns...**
- **National support/investment in sound regional local/regional initiatives aligned with/support the NSS and the South East RPGs...**
- **A more strategically focused planning system that knows when to put regional gain before local considerations...**

Implementation Priorities

- ***National*** – embedding the NSS in national level policies, including investment priorities...
 - NDP 2007 – 2013
 - 5 year capital envelopes
- ***Regional*** – Implementaion of Regional Planning Guidelines...
- ***Local*** – planning delivering on strategic issues
 - critical mass – integration of land use and transport – urban quality...

Implementation Milestones - National

- **Govt decision on the next NDP....**
- **Transport 21...**
- **NSS/Regional Development – capital spending...**
- **Spatial planning on the island of Ireland...**
- **Interdepartmental Implementation Team...**
- **Research...**

Implementation Milestones - Regional

- **Adoption of Regional Planning Guidelines...**
- **RPG Implementation...**
- **Regular DoEHLG / Regional Authorities meetings....**
- **Regional Authority inputs to NDP 2007-2013...**

Implementation Milestones + Issues - Local

- **Milestones**

- **Incorporation of RPGs into Development Plans...**
- **Gateways and Hubs implementation teams...**

- **Issues**

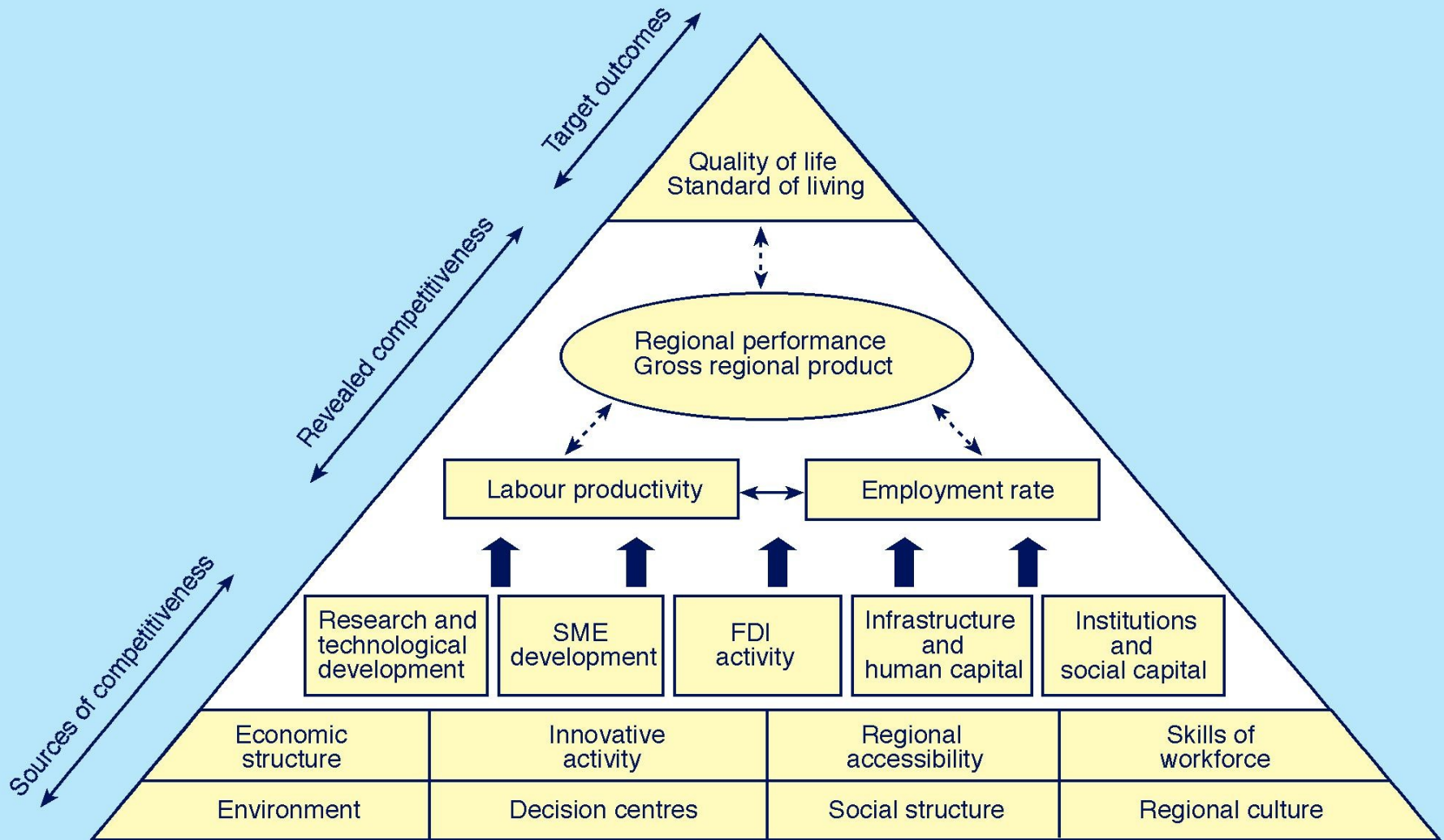
- **Promotion of the hubs is being facilitated through (1) an integrated approach...(2) a driver...(3) good planning...**
- **Innovative Planning Strategies a key starting point... CASP, Waterford PLUTS, Sligo Development Plan...**
- **Implementation plan – who does what...**
- **Focusing on *the* strategic priorities establishes a platform for national level support/investment ...**



Part 2

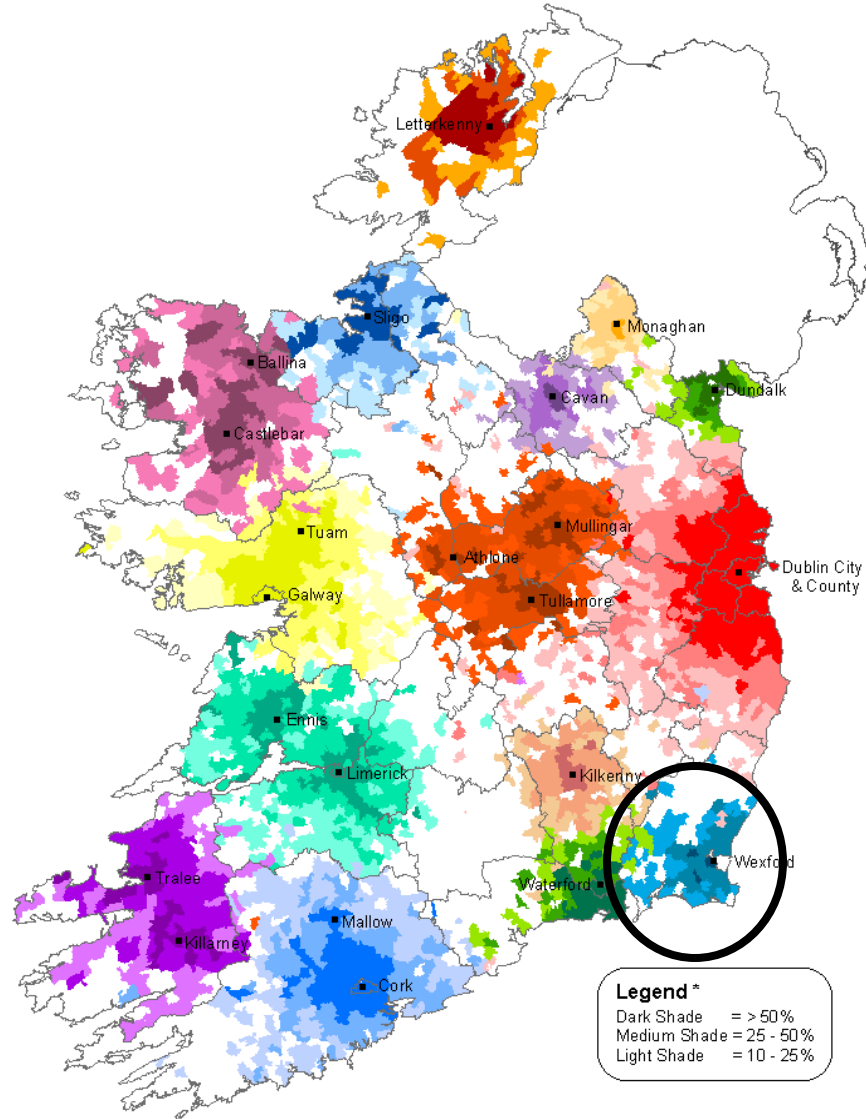
Implementation - Wexford

A 'Pyramidal model' of regional competitiveness

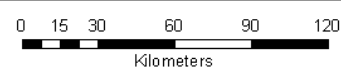


Sources: Based on Begg (1999), European Commission (1999), Jensen-Butler (1996), Lengyel (2000, 2003)

Travel to Work Patterns 2002 Gateway & Hub Catchment Areas



* Persons in each ED working in a particular Gateway or Hub as a percentage of total sample number in each ED
Data Source: CSO POWSAR Data
Digital boundaries provided by Ordnance Survey Ireland



Wexford Hub : Development since NSS Launch

- Much is happening – examples
 - 3 400 **housing** units approved...
 - Population grown from about 17 200 > 20 000
 - **unemployment** down...
 - Investment in transport – progress in N11, rail line renewed - rolling stock on order...
 - Investment in **retail** - 2 retail parks...
 - Investment in **hotels**
 - Investment in water services - **Water treatment** scheme commissioned and water losses reduced > 3 000m³/day available for new development
 - DoEHLG Headquarters

Wexford Hub : Sustaining & Building Momentum (1)

- Sustain and expand the **physical capital**
- **Basic Services**
 - **Water, waste water, solid waste Wexford well placed**
 - **Connectivity ... road, rail, air & port**
 - **Telecommunications ... broadband**
 - **Electricity ... Adequate supply**
- **Buildings**
 - **Statement building, preservation of heritage**
- **Town form**
 - **Townscapes presevation. Landscaping etc**

Wexford Hub : Sustaining & Building Momentum (3)

- Sustain and build **economic capital**
 - Capitalise on strengths and opportunities
 - physical environment
 - proximity to UK/international transit routes - (RPG suggests building links)
 - Expanding population > diversity of skills base
 - Marketing ... branding

Wexford Hub : Sustaining & Building Momentum (4)

- Preserve and enhance **environmental capital**

- A green future ... a green hub!...
- Sustainable exploitation of a key asset ...
Slaney...Wexford Harbour...
- Historic and characterful feel to Wexford...
- Clean and litter free...
- Active and passive open spaces...
- linked with rural (walks, trails, etc)...
- education and training...research...
- energy efficiency...
- EPA/DoEHLG HQ's - an opportunity & resource...

Wexford Hub : Sustaining & Building Momentum (2)

- **Build Social + Organisational capital**
 - Capacity to explore + deliver visions, options, medium to longer term scenarios..
 - Use of Development Plan process to build relationships...between sectors... locally+nationally...
 - Continue to support RAPID programme...
 - Vibrant and truly inclusive social inclusion programmes...
 - Events (eg Opera Festival) key to strengthening identity and attractiveness...

What can you do in the short/medium term?

- Fully explore Hub concept and input into Development Plan...
- Clearly identify and articulate priority capital needs for possible input into NDP process...
- Build on local distinctiveness and vitality..
- Develop 10 point implementation plan...
- We will work with you....
- Thank You...